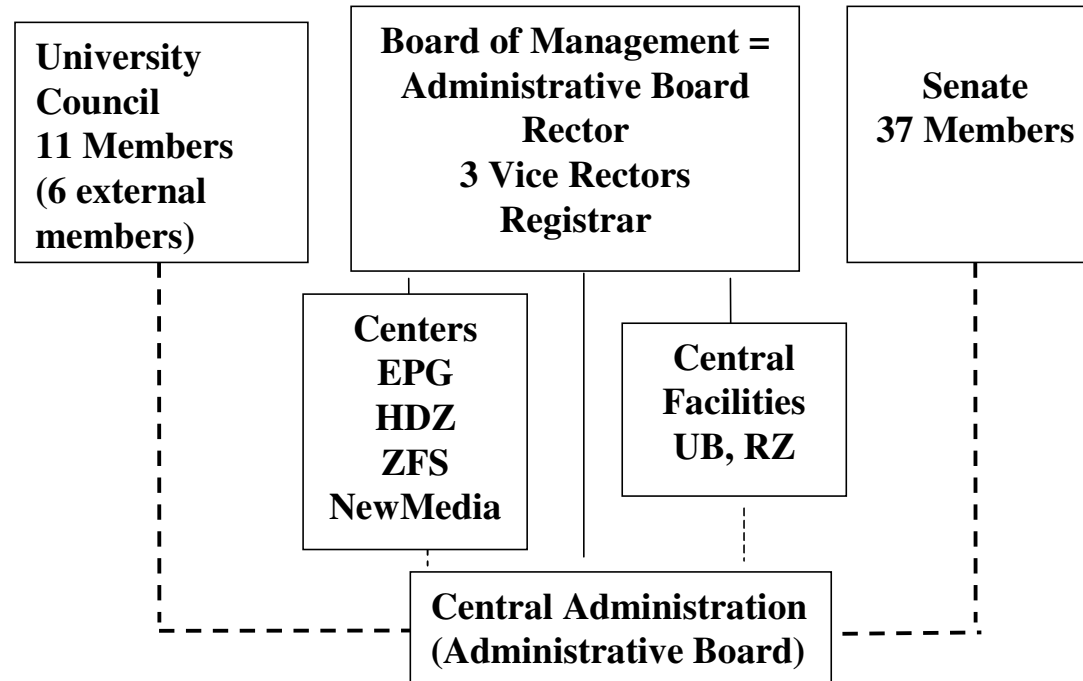


Structure of the University of Freiburg



Do you have questions about the use of
New Media in teaching, research and administration?

Media
New Net



Please contact: **Coordination Office for New Media
(Koordinierungsstelle für Neue Medien)**

We...

inform about the media infrastructure
(e.g. web presence, Content Management System) at the University of Freiburg

advise new and ongoing e-learning projects

qualify with project-oriented training for the reasonable use
of new media in university teaching

network developers, users and interested persons

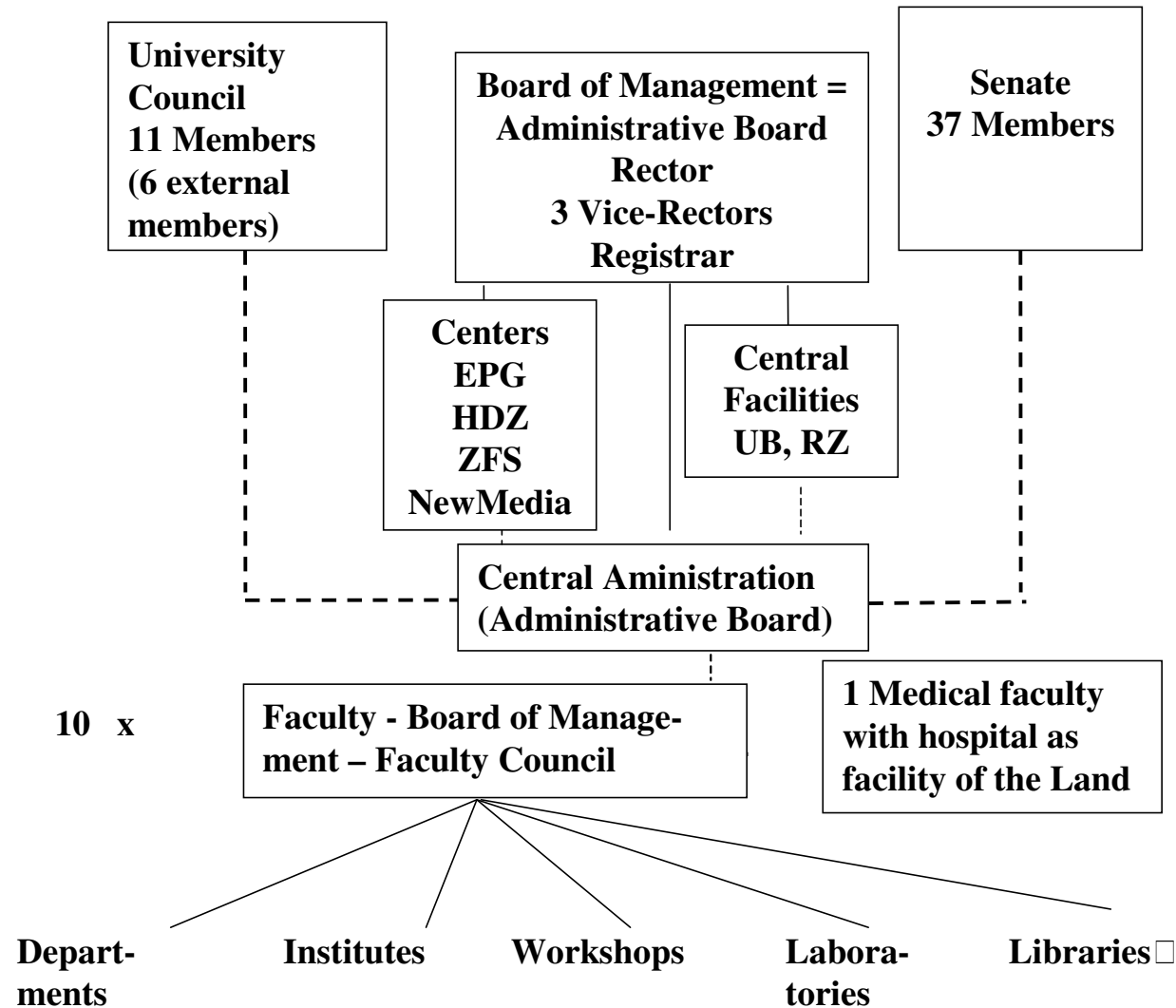
support your project with the Media Team



www.newmedia.uni-freiburg.de



Structure of the University of Freiburg



Finances of the University of Freiburg

Overall	268 mio. €
for the Medical Faculty	126 mio. €
remain for the rest of the university	142 mio. €

These amounts are spent as follows:

Expenditure on personnel of the university	109 mio. €
for tangible expenses and investments	33 mio. € 26 mio. for tangible exp.; 7 mio. for investments
additional third-party funds per year	90 mio. €



**Additional resources
that are not included in the university budget and are
financed separately by the Federation and the Land**

--Large building projects

--Purchasing of large devices



Endowment fund value **32 mio. €**

**assets that are property of the university
and not of the Land**

- 90 apartments**
- 110 hectares of forest**
- Vineyards of 2 hectares
approx. 10 000 bottles of wine per year**
- Art treasures
(Manuscripts, deeds, paintings, scepters, etc.)**



Staff structure of the university (without clinical center)

Employees **approx. 6500**
(civil servants, employees in accordance with the tariff, trainees, student and teaching assistants)

Listed according to category

- paid for by third-party funds approx.	1700
- temporarily employed approx.	3800
- employed in the scientific service limited in time and unlimited approx.	3900
- student and teaching assistants approx.	1800
Teaching assignments and assistants e.g. for sports approx.	1000
Contracts for work and services approx.	1000

**Members of the university: PD,
honorary professors, extraordinary professors** **all in all 1000**



Perspectives

Job Opportunities

